

For Sale



2 Storey Model

\$

The Newport

This Home Features:

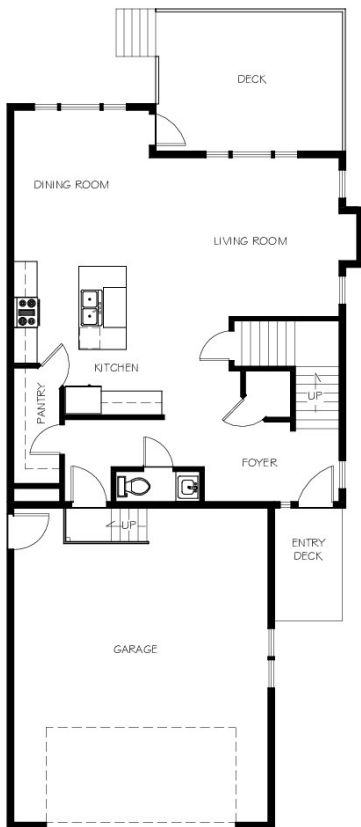
The Newport is a spacious 2 storey model home with a beautiful open concept plan. The large kitchen features a walk-through pantry, stainless steel appliances, and large island. Just off the kitchen you can find the living room which has a gas fireplace surrounded by beautiful built-ins. The master bedroom has a five piece master ensuite with a soaker tub and large walk-in closet. This model exhibits a bonus room upstairs and another large family room in the basement that also includes a wet bar and one of four bedrooms.



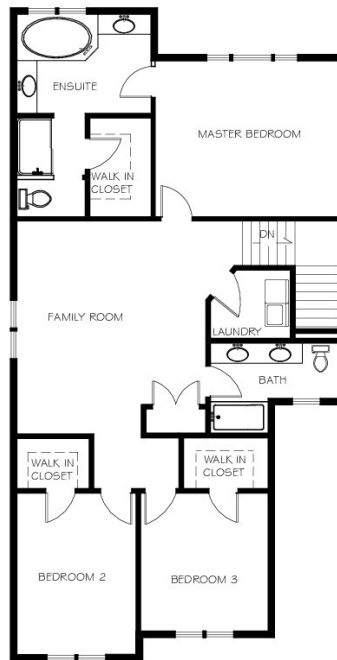
Contact us or visit our website for more listings and details



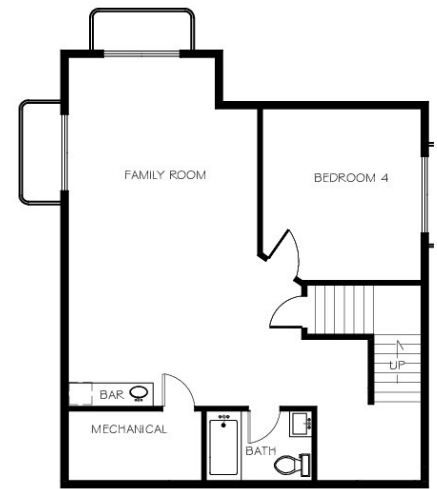
The Newport Floor Plan



MAIN FLOOR PLAN



SECOND FLOOR PLAN



BASEMENT FLOOR PLAN



Greenwood Homes



Greenwoodhomes_yql

Features:

Square Footage:
 Above Grade: 2283 sq. ft.
 Below Grade: 840 sq. ft.

Quick Possession Models Available:

111 Riverford Close, West	\$
633 Aquitania Blvd, West	\$
8 Northlander Way, West	\$

- 4 Bedrooms, 3.5 Bathrooms
- 2 Family Rooms
- Cabinetry by Adora Kitchens
- Walk Through Pantry
- Fully Developed Basement with Wet Bar
- Gas Fireplace
- Greenwood's Signature Deck With Duradeck Covering and Gas Line Included



Contact us or visit our website for more listings and details

